

o o o o



Sunday, May 1st
2022

**CAPITAL
CAMPAIGN
INFORMATION
SESSION**

o o o o

Here We Are!

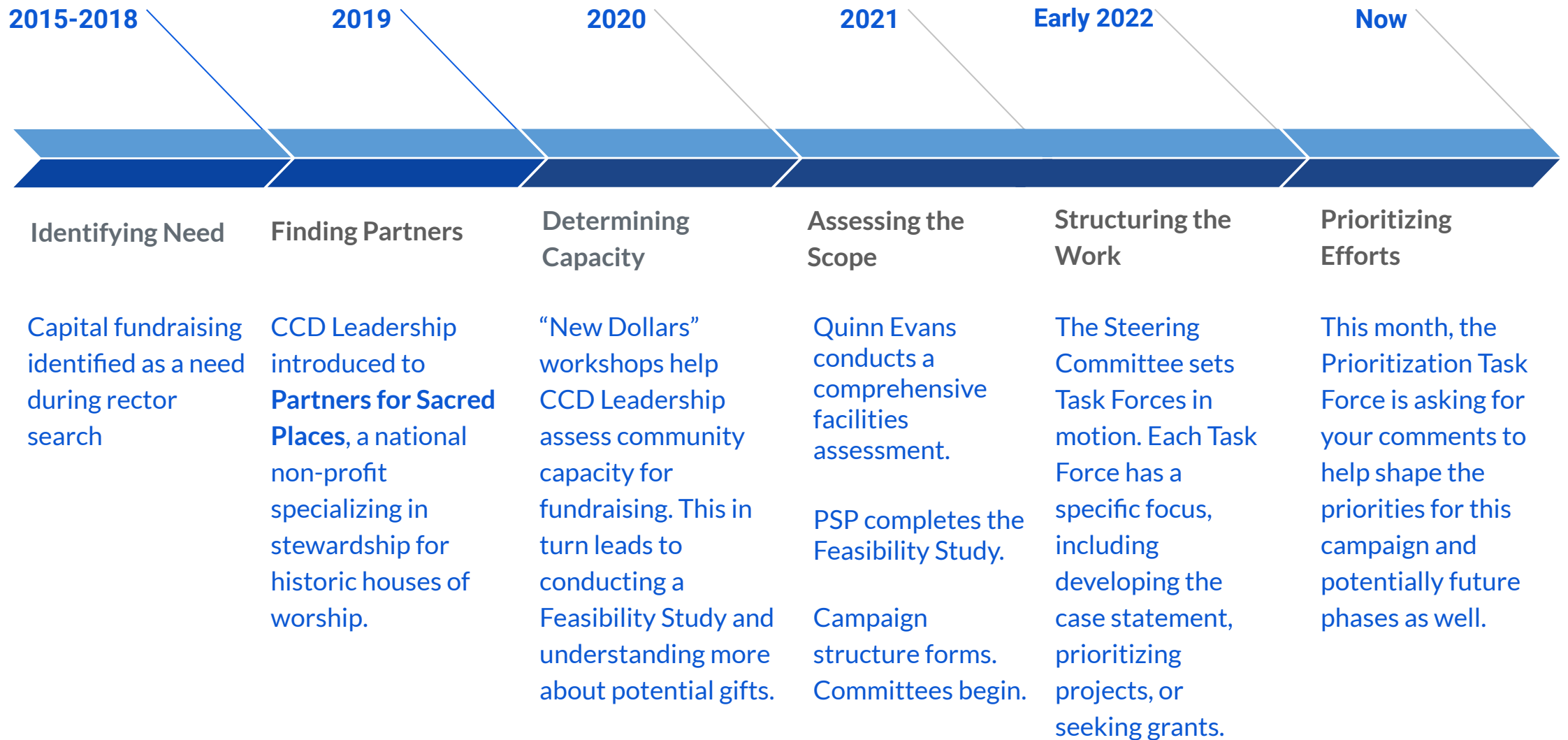
Christ Church is about to embark on a Capital Campaign...

...which you can help shape!

Perhaps you've heard that this campaign is in the works. You may have even been one of the people who has supported some of our most urgent projects. Or this could be the very first time you are hearing about a capital campaign. Today, we want to bring everyone up to speed, so that together we can go farther, faster!

Today, we're going to update you on how Christ Church Detroit leadership has been organizing for this campaign. We're going to provide you with the context, and most importantly, we're going to provide you with ways you can be involved.

Progress Toward this Campaign



Campaign Focus

Community-oriented

- To strengthen local community while caring for buildings
- To care for buildings to strengthen local community
- Deepen CCD's mission & increase public awareness
- Include internal and external community members

Comprehensive

- Foundations & grants
- Planned gifts

Future leadership

- Develop capacity for next campaigns

Here's Where YOU Come In!

Even with some known commitments, there is still **room to dream, imagine, and shape** the future! Reflect on what matters to you, and what you think would best further the mission of Christ Church.

Then, participate in an upcoming listening session, where campaign leadership will facilitate discussions about projects and priorities.

In Person: Sunday, May 15th, 12:30 p.m.
Cary Lounge

VIRTUAL: Tuesday, May 17th at 6:30 p.m. (*info will be in eNews, too*)
Zoom - <https://us02web.zoom.us/j/86018167943>
By Phone - 1-312-626-6799, then enter Meeting ID 860 1816 7943

Congregational Survey and Master Plan

After that ...

... look out for a survey by early June, to help narrow down ideas!

Our Prioritization Task Force will gather and analyze your feedback, and provide a report to the Steering Committee and Vestry by the end of June.

Meanwhile, Quinn Evans architects will start to conduct a Master Plan process for the long-term care for our buildings. About thirty people will be invited to participate in those interviews, depending on the particular perspectives the architects need. Quinn Evans anticipates completion of the Master Plan process by early fall.

Steering Committee Members

Christ Church is grateful for the service and leadership
of the Campaign Steering Committee

The Rev. Dr. David D. Dieter

Jane Forbes, Treasurer

The Rev. Emily Williams Guffey, Rector

Lisa C. Jones, Co-Chair

Lauren Staif Leney

Seth Lloyd, Co-Chair

Kevin Maher

Dr. Ed Maki-Schramm

Dr. Steven McGhee, Community Partner, Opera MODO

Matthew Schenk, Community Partner, Reconstructionist Congregation of Detroit

Beth Ann Tesluk

Betty Warner

Danielle Wright, Community Partner, Opera MODO

Task Force Leadership

And for the service and leadership of Task Force Chairs!

Prioritization Task Force

Susan Diehl and Dr. Howard Matthew, Co-Chairs

Case Statement Task Force

Dr. Ruth Boeder and Jim Treece, Co-Chairs

Communications Task Force

Kevin Maher and Susan Larsen, Co-Chairs

Development Task Force

Dr. Ed Maki-Schramm, Chair

Diaspora Task Force

Cathy Berlage and Sue Webb-Dickson, Co-Chairs